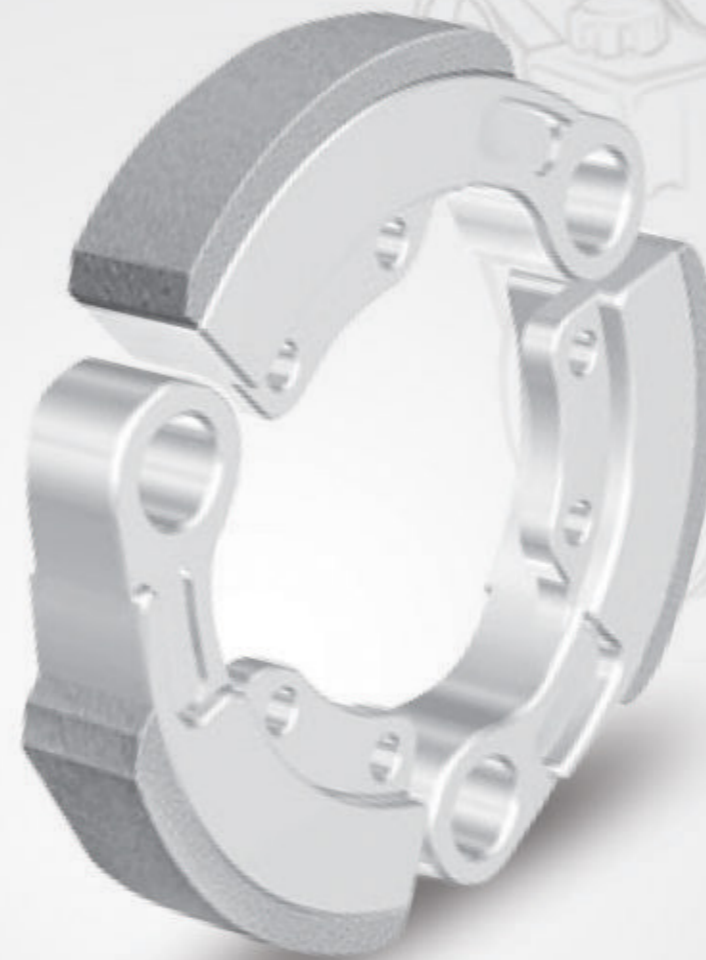




**FEDERAL-MOGUL
MOTORPARTS**

FERODO®



CLUTCH SHOES



E-CATALOGUE



Clutch Shoes



| Part Number | Name | Specification | Application |
|-------------|--------------------|---|---|
| FCC0570 | FERODO CLUTCH SHOE | Asbestos free friction formulation Health and environment friendly | KINETIC KINETIC-ZX 100 |
| FCC0571 | FERODO CLUTCH SHOE | Enhanced resistance against judder and continuous slip Effective high speed performance | MAHINDRA MAHINDRA-DURO MAHINDRA MAHINDRA-FLYTE 125 |
| FCC0572 | FERODO CLUTCH SHOE | Superior quality and excellent thermal properties of friction material Health and environment friendly | HONDA HONDA-ACTIVA |
| FCC0573 | FERODO CLUTCH SHOE | Asbestos free friction formulation Effective high speed performance | KINETIC KINETIC-STYLE 75 |
| FCC0575 | FERODO CLUTCH SHOE | Enhanced resistance against judder and continuous slip Health and environment friendly | TVS TVS-SCOOTY |
| FCC0576 | FERODO CLUTCH SHOE | Asbestos free friction formulation Effective high speed performance | TVS TVS-SCOOTY PEP |
| FCC0577 | FERODO CLUTCH SHOE | Enhanced resistance against judder and continuous slip Effective high speed performance | HERO HONDA HERO HONDA-PLEASURE |
| FCC0578 | FERODO CLUTCH SHOE | Superior quality and excellent thermal properties of friction material Effective high speed performance | |
| FCC0579 | FERODO CLUTCH SHOE | Superior quality and excellent thermal properties of friction material Effective high speed performance | SUZUKI SUZUKI-ACCESS |
| FCC0574 | SUPER STAR | Superior quality and excellent thermal properties of friction material Smooth acceleration without compromising on drive | TVS TVS-STAR |